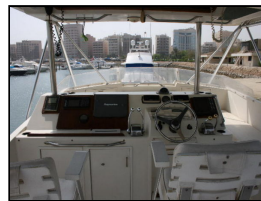




Ocean Sport 55 SS - Trade in Possible



Make: Ocean Sport
Model: 55 SS - Trade in Possible
Length: 55 ft
Price: USD 270,000
Year: 1987
Condition: Used
Location: , United Arab Emirates

Hull Material: Fibreglass (GRP)
Draft: 4 ft 4 in
Number of Engines: 2
Fuel Type: Diesel
Total Power: 1470 hp
Number: 534877

Arabia Yachting & Management Services FZ LLC

Unit P12 Rimal, The Walk, Jumeirah Beach Residence, Dubai PO Box: 487177, United Arab Emirates

Tel: +971 50 356 7045 info@arabiyachting.com

<http://www.arabiyachting.com>

Description

Ocean Yachts is admired as an East Coast yacht building company that exemplifies an American tradition of sport fishers with fine lines and an excellent fit and finish. The Ocean 55 SS has the beautiful thoroughbred lines of a competitor combined with a sensible interior layout reminiscent of the well respected (and tamer) Hatteras 60's.

Equipped with twin 735 H.P. Detroit Diesels to give 27 knot speeds, the Ocean Super Sport is clearly built to get to the fishing grounds quickly. Set up to catch the big ones in style, the large cockpit and expansive foredeck spaces also make this yacht very suitable for diving and enjoying other water sports as well. Although the Ocean 55 SS is the choice of many experienced sport fishermen, whether your local yachting pleasure is fishing, diving, entertaining, weekends, expeditions, or just to have a nice home away from home on the water, this yacht is capable of meeting your expectations and more, very nicely.

Measurements

Cruising Speed:	18 kn	Displacement:	58000 lb
Max Speed:	27 kn	Fuel Tanks Cap.:	1000 gal
LOA:	55 ft	Fresh Water Tanks Cap.:	200 gal
Beam:	16 ft 4 in		
Max Draft:	4 ft 4 in		

Propulsion

Number of Engines:	2	Total Power:	1470 hp
Drive Type:	Shaft Drive		
Engine Make:	Detroit Diesel		
Engine Model:	8V92TA's		

GENERAL

- Blind version

ACCOMODATION

The interior features an elegant salon with an Up-galley and a comfortable 3 stateroom floor plan. The on-board accommodations are very roomy and suitable for entertaining, taking a family weekend get-away, and for serious fishing. On deck a high, flared bow with an expansive foredeck trims aft to a wide and roomy fishing cockpit. Above the deckhouse is a spacious flying bridge deck with complete controls and comfortable observation seating.

MACHINERY

- Westerbecke generator
- Cruisair A/C
- Pair of spare propellers

NAVIGATION

- 3rd helm station in cockpit
- 4th helm station on tuna tower
- Garmin GPS Map 225
- Sitex Loran C 790
- Northstar Navigator
- Furuno SSB Transceiver FS-1501
- Robertson N100 Autopilot
- Cybernet CTX 1000 VHF
- Horizon Maxi Standard VHF
- Shipmate RS 5900 Colour Chart Plotter
- Raymarine C120 Radar / Chart Plotter
- Datamarine Navigator Log
- Datamarine International Offshore Depth
- Danforth Compass

DECK FITTINGS

- Tuna Tower
- Extended swimplatform
- Teak laid cockpit
- Transom tuna door
- Outriggers
- Cockpit sun cover
- Foredeck tender crane
- Foredeck tender berth
- Electric windlass
- Fridge on F/B
- Fridge in cockpit
- L Seattee on F/B ahead helm station

DISCLAIMER

Arabia Yachting offers the details of this vessel in good faith but cannot guarantee or warrant the accuracy of this information nor warrant the condition of the vessel. A buyer should instruct his agents, or his surveyors, to investigate such details as the buyer desires validated. This vessel is offered subject to prior sale, price change, or withdrawal without notice.

Photos



Photo 1



Alongside



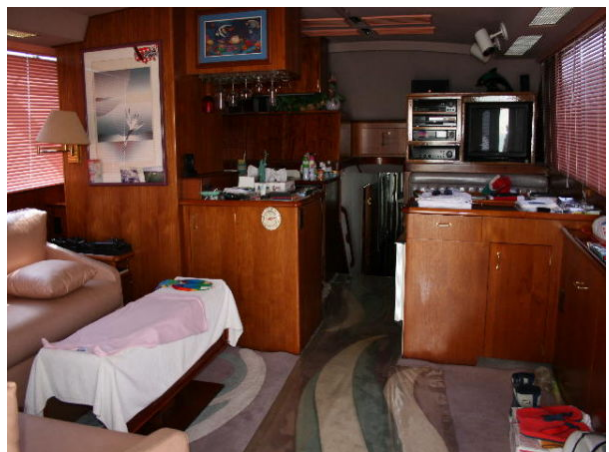
Cockpit



F/B looking fwd



Foredeck



Salon looking fwd



Salon



Master cabin



Twin cabin



Bunks cabin